

Since 1980, DS Stoves has been the premier choice for whole house heating solutions. As a family-owned business in Lancaster, Pennsylvania, we are honored to apply our family values and integrity to every wood, coal furnace and stove we manufacture. Traditional craftsmanship defines each stove, with a promise of high efficiency, low maintenance and quality to last a lifetime. With four divisions: Stove Manufacturing, Retail, Wholesale, Custom and Production Fabrication; we engineer, manufacture and custom-make stoves for sale in our local retail store and across the country. DS Stoves is rich in tradition, with honesty and integrity built in.

Which DS product is right for you?

	First Floor	Basement	Whole House	Forced Hot Air	Coal	Wood	Freestanding Unit	Hot Water Heating	Green House/Shop
DS Circulator	●	●	●		●		●		
EnergyMax #110	●	●	●		●	●	●		
EnergyMax #160		●	●		●	●	●		●
Kozy-King		●	●	●	●	●			●
Ecomiser		●	●	●	●	●			●
HeatRight	●	●	●		●	●	●		
Comfort Max	●	●	●		●	●			
Econo Riteburn	●	●	●		●	●	●		●
CoalMaster		●	●		●				●
Power Boilers # 5000, 6000, 7000					●	●		●	●
Aqua-Gem Boilers #1100 , 3200, 4200	●	●			●		●	●	

Things to Consider When Purchasing

#200-10 Ecomiser _____

#200-FB Filter Box _____

#23-6 Domestic Coil _____

CO and Smoke Alarm _____

_____ ft. _____ inch Stove Pipe
 Black or Stainless Steel _____

_____ Pieces _____ inch Elbow (2 max)
 Black or Stainless Steel _____

_____ inch Trim Collar for Masonry Chimney . _____

Screws for Stove Pipe
 Black or Stainless Steel _____

_____ ft. Stainless Steel Chimney Relining Kit _____

_____ ft. Insulated Chimney
 Masonry or Stainless Steel _____

Hearth Board (U.L.1618) _____ (brand) _____

Wall Protection Board _____ (brand) . . _____

SubTotal _____

Tax _____

TOTAL _____

Prices are subject to change without notification

Authorized Dealer



Ecomiser

Model #200-10



A quality, low maintenance furnace

Where tradition, craftsmanship and quality come first



Low Budget, High Efficiency

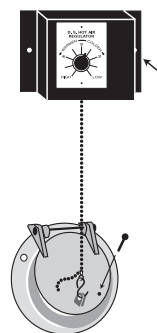
The Ecomiser was designed to be economical. This U.L. listed wood and coal burning furnace is controlled with a bi-metal regulator, combining with secondary combustion for maximum efficiency, using less fuel. The Ecomiser offers a domestic water option and a single-speed blower. It can heat a whole house, shop or greenhouse for less money.

FEATURES:

- Burns coal and wood
- Hot air furnace
- Heats up to 2500 sq. ft.
- Preset secondary combustion
- Bi-metal draft regulator
- Built from heavy plate steel
- Superior cast iron Shaker grates
- Cast iron airtight doors
- Large loading door
- Large ash pan
- Auto on and off blower
- Removable oxygen reburn system
- Optional 18" x 18" filter
- Box with left or right inlet
- Exterior Shaker handles
- Minimal dust
- Made in the USA

THE DS REGULATOR

The DS Regulator is not electrical. It uses two different metals bonded together. The metals expand in different ways, directing the heat to where it is needed. Mounted directly on the hot surface of the stove, it governs the temperature by opening or closing the draft control. This draft control connects to a specially designed draft intake, through which air can enter to increase or decrease the temperature of the fire, depending on the heat radiated from the stove. The DS Regulator is equipped with a 5-position mechanical control dial.



SPECIFICATIONS

#200-10	
Fuel	Wood & Coal
Heating area (recommended)	1000-2500 sq. ft.
Efficiency	76.4%
BTU approximately	120,000
Firebox size (WxD)	16" x 24"
Firebox volume	5.5 cu. ft.
Log size	22"
Overall size (WxDxH)	24" x 29.5" x 49.75"
Depth including filter box	50.5"
Load door size (WxH)	14" x 14.5"
Ash door size (WxH)	16.5" x 5.5"
Top exhaust	N/A
Rear exhaust	6" -44" center of flue
Plenum inlet and outlet	18" x 18"
Blower CFM	965
U.L. tested	Yes*
Weight	500 lbs.
Sheet metal jacket	Standard
Warranty	5-year limited 1-year electrical

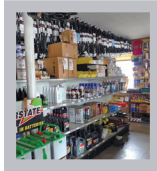
CLEARANCE FROM COMBUSTIBLES

Side	18"
Back	24"
Front	48"
Flue/Stove pipe	18"
Top of plenum to ceiling	2"

All units require a class "A" all fuel chimney installation that must conform to local and state codes.

*Safety tested and labeled to U.L. Standards by Guardian Fire testing, to U.L. 391, ETL78-1, CAN/CSA B-366.1

Manufactured by DS Stoves, Gordonville, PA ■ (717) 768-3853



Since 1980, DS Stoves has been the premier choice for whole house heating solutions. As a family-owned business in Lancaster, Pennsylvania, we are honored to apply our family values and integrity to every wood, coal furnace and stove we manufacture. Traditional craftsmanship defines each stove, with a promise of high efficiency, low maintenance and quality to last a lifetime. With four divisions: Stove Manufacturing, Retail, Wholesale, Custom and Production Fabrication; we engineer, manufacture and custom-make stoves for sale in our local retail store and across the country. DS Stoves is rich in tradition, with honesty and integrity built in.

Which DS product is right for you?

	First Floor	Basement	Whole House	Forced Hot Air	Coal	Wood	Freestanding Unit	Hot Water Heating	Green House/Shop
DS Circulator	●	●	●		●		●		
EnergyMax #110	●	●	●		●	●	●		
EnergyMax #160		●	●		●	●	●		●
Kozy-King		●	●	●	●	●			●
Ecomiser		●	●	●	●	●			●
HeatRight	●	●	●		●	●	●		
Comfort Max	●	●	●		●	●			
Econo Riteburn	●	●	●		●	●	●		●
CoalMaster		●	●		●		●		●
Power Boilers # 5000, 6000, 7000					●	●		●	●
Aqua-Gem Boilers #1100 , 3200, 4200		●	●		●	●		●	●

Things to Consider When Purchasing

#120 HeatRight.

#23-6 Domestic Coil.

CO and Smoke Alarm.

_____ ft. _____ inch Stove Pipe
 Black or Stainless Steel.

_____ Pieces _____ inch Elbow (2 max)
 Black or Stainless Steel.

_____ inch Trim Collar for Masonry Chimney.

Screws for Stove Pipe
 Black or Stainless Steel.

_____ ft. Stainless Steel Chimney Relining Kit _____

_____ ft. Insulated Chimney
 Masonry or Stainless Steel.

Hearth Board (U.L.1618) _____ (brand) _____

Wall Protection Board _____ (brand)

SubTotal _____

Tax _____

TOTAL _____

Prices are subject to change without notification

Authorized Dealer



HeatRight

Model #120



A versatile and simple furnace

Where tradition, craftsmanship and quality come first

Heating Done Right

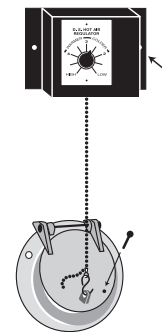
No need to spend thousands of dollars. The HeatRight 120 can handle coal or wood. It can heat your whole house, shop, or just about any space. The HeatRight is a mid-range quality product, designed for durability, low-cost, simple operation. It features a bi-metal draft regulator, heavy plate steel construction, and Shaker exterior handles.

FEATURES:

- Burns coal or wood
- Heats up to 2600 sq. ft.
- Secondary combustion system
- Bi-metal draft regulator
- Built from heavy plate steel
- Superior cast iron Shaker grates
- Cast iron airtight doors
- Exterior Shaker handles
- Minimal dust
- Made in the USA

THE DS REGULATOR

The DS Regulator is not electrical. It uses two different metals bonded together. The metals expand in different ways, directing the heat to where it is needed. Mounted directly on the hot surface of the stove, it governs the temperature by opening or closing the draft control. This draft control connects to a specially designed draft intake, through which air can enter to increase or decrease the temperature of the fire, depending on the heat radiated from the stove. The DS Regulator is equipped with a 5-position mechanical control dial.



SPECIFICATIONS

	#120
Fuel	Wood & Coal
Heating area (recommended)	2500 sq. ft.
Efficiency	80%
BTU approximately	125,000
Firebox size (WxD)	16" x 22"
Firebox volume	4.0 cu. ft.
Log size	20"
Overall size (WxDxH)	25" x 29.75" x 36.5"
Load door size (WxH)	11" x 12"
Ash door size (WxH)	16.5" x 5.5"
Top exhaust	6"
Rear exhaust	N/A
Blower CFM	N/A
U.L. tested	Yes*
Weight	440 lbs.
Sheet metal jacket	Standard
Warming shelf	N/A
Warranty	5-year limited

CLEARANCE FROM COMBUSTIBLES

Side	18"
Back	18"
Front	48"
Flue/Stove pipe	18"
Ceiling	36"

All units require a class "A" all fuel chimney installation that must conform to local and state codes.

*Safety tested and labeled to U.L. Standards by Guardian Fire testing, to U.L. 391, ETLM78-1, CAN/CSA B-366.1



Manufactured by DS Stoves, Gordonville, PA ■ (717) 768-3853



Since 1980, DS Stoves has been the premier choice for whole house heating solutions. As a family-owned business in Lancaster, Pennsylvania, we are honored to apply our family values and integrity to every wood, coal furnace and stove we manufacture. Traditional craftsmanship defines each stove, with a promise of high efficiency, low maintenance and quality to last a lifetime. With four divisions: Stove Manufacturing, Retail, Wholesale, Custom and Production Fabrication; we engineer, manufacture and custom-make stoves for sale in our local retail store and across the country. DS Stoves is rich in tradition, with honesty and integrity built in.

Which DS product is right for you?

	First Floor	Basement	Whole House	Forced Hot Air	Coal	Wood	Freestanding Unit	Hot Water Heating	Green House/Shop
DS Circulator	●	●	●		●		●		
EnergyMax #110	●	●	●		●	●	●		
EnergyMax #160		●	●		●	●	●		●
Kozy-King			●	●	●	●			●
Ecomiser		●	●	●	●	●			●
HeatRight	●	●	●		●	●			
Comfort Max	●	●	●		●	●			
Econo Riteburn	●	●	●		●	●	●		●
CoalMaster		●	●		●		●		●
Power Boilers # 5000, 6000, 7000					●	●		●	●
Aqua-Gem Boilers #1100 , 3200, 4200		●	●		●	●		●	●

Things to Consider When Purchasing

#1624 Econo Riteburn _____

#1624-5 Sheet Metal Kit Galv. _____

CO and Smoke Alarm _____

_____ ft. _____ inch Stove Pipe
 Black or Stainless Steel _____

_____ Pieces _____ inch Elbow (2 max)
 Black or Stainless Steel _____

_____ inch Trim Collar for Masonry Chimney . _____

Screws for Stove Pipe
 Black or Stainless Steel _____

Manual Damper _____

_____ ft. Stainless Steel Chimney Relining Kit _____

_____ ft. Insulated Chimney
 Masonry or Stainless Steel _____

Hearth Board (U.L.1618) _____ (brand) _____

Wall Protection Board _____ (brand) . . . _____

Heat Savor _____

SubTotal _____

Tax _____

TOTAL _____

Prices are subject to change without notification

Authorized Dealer

DS STOVES Econo Riteburn Model #1624



An affordable stove to heat your entire home or workshop



Where tradition, craftsmanship and quality come first

A Great Starter Stove

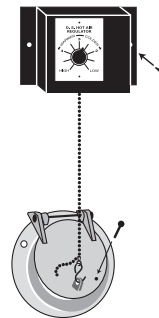
The Econo Riteburn provides plenty of heat at a reasonable price. If you choose, this stove can be used as a secondary heat source to get you started. It is ideal for shops and greenhouses. Controlled by our special DS Regulator, the Econo Riteburn is easy to operate and requires low maintenance. It could be the right burner for you.

FEATURES:

- Burns coal or wood
- Heats up to 2600 sq. ft.
- Secondary combustion system
- Bi-metal draft regulator
- Built from quality steel
- Superior cast iron Shaker grates
- Cast iron airtight doors
- Available in left or right hand door opening
- Optional sheet metal jacket
- Exterior Shaker handles
- Minimal dust
- Good value
- Made in the USA

THE DS REGULATOR

The DS Regulator is not electrical. It uses two different metals bonded together. The metals expand in different ways, directing the heat to where it is needed. Mounted directly on the hot surface of the stove, it governs the temperature by opening or closing the draft control. This draft control connects to a specially designed draft intake, through which air can enter to increase or decrease the temperature of the fire, depending on the heat radiated from the stove. The DS Regulator is equipped with a 5-position mechanical control dial.



SPECIFICATIONS

	#1624
Fuel	Wood & Coal
Heating area (recommended)	1500-2600 sq. ft.
Efficiency	71.5%
BTU approximately	140,000
Firebox size (WxD)	16" x 24"
Firebox volume	4.9 cu. ft.
Log size	22"
Overall size (WxDxH)	29.5" x 30" x 36"
Load door size (WxH)	11" x 12"
Ash door size (WxH)	16.5" x 5.5"
Top exhaust	7" Left or Right
Rear exhaust	N/A
Blower CFM	N/A
U.L. tested	Yes*
Weight	415 lbs.
Sheet metal jacket	Optional
Warming shelf	N/A
Warranty	5-year limited

CLEARANCE FROM COMBUSTIBLES

Side	24"
Side Door	48"
Back Exhaust Side	30"
Front	24"
Flue/Stove pipe	18"
Ceiling	36"

All units require a class "A" all fuel chimney installation that must conform to local and state codes.

*Safety tested and labeled to U.L. Standards by Guardian Fire testing, to U.L. 391, ETL78-1, CAN/CSA B-366.1



Manufactured by DS Stoves, Gordonville, PA ■ (717) 768-3853



Since 1980, DS Stoves has been the premier choice for whole house heating solutions. As a family-owned business in Lancaster, Pennsylvania, we are honored to apply our family values and integrity to every wood, coal furnace and stove we manufacture. Traditional craftsmanship defines each stove, with a promise of high efficiency, low maintenance and quality to last a lifetime. With four divisions: Stove Manufacturing, Retail, Wholesale, Custom and Production Fabrication; we engineer, manufacture and custom-make stoves for sale in our local retail store and across the country. DS Stoves is rich in tradition, with honesty and integrity built in.

Which DS product is right for you?

	First Floor	Basement	Whole House	Forced Hot Air	Coal	Wood	Freestanding Unit	Hot Water Heating	Green House/Shop
DS Circulator	●	●	●		●		●		
EnergyMax #110	●	●	●		●	●	●		
EnergyMax #160		●	●		●	●	●		●
Kozy-King		●	●	●	●	●			●
Ecomiser		●	●	●	●	●			●
HeatRight	●	●	●		●	●	●		
Comfort Max	●	●	●		●	●	●		
Econo Riteburn	●	●	●		●	●	●		●
CoalMaster		●	●		●		●		●
Power Boilers # 5000, 6000, 7000					●	●		●	●
Aqua-Gem Boilers #1100 , 3200, 4200	●	●			●	●		●	●

Things to Consider When Purchasing

#2100 WH CoalMaster

CO and Smoke Alarm

_____ ft. _____ inch Stove Pipe
 Black or Stainless Steel

_____ Pieces _____ inch Elbow (2 max)
 Black or Stainless Steel

_____ inch Trim Collar for Masonry Chimney .

Screws for Stove Pipe
 Black or Stainless Steel

Manual or Barometric Damper

_____ ft. Stainless Steel Chimney Relining Kit _____

_____ ft. Insulated Chimney
 Masonry or Stainless Steel

Hearth Board (U.L.1618) _____ (brand) _____

Wall Protection Board _____ (brand) . .

SubTotal _____

Tax _____

TOTAL _____

Prices are subject to change without notification

Authorized Dealer

DS STOVES CoalMaster Model #2100 WH



A gravity-fed coal stove that can heat up to 3,000 sq. feet



Where tradition, craftsmanship and quality come first

Stay Warm Longer

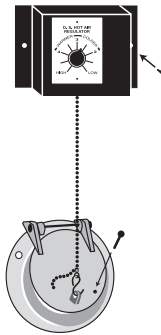
The CoalMaster can heat your entire home using no electricity. The gravity-fed hopper provides up to two days of continuous heat. This basement model features a window for monitoring. Works great in greenhouses and shops, too.

FEATURES:

- Burns coal
- Heats up to 3000 sq. ft.
- 24-48 hour burn time
- Bi-metal draft regulator
- Built from quality steel
- Superior cast iron Shaker grates
- Cast iron airtight doors
- Removable coal hopper
- Exterior Shaker handles
- Minimal dust
- Good value
- Made in the USA

THE DS REGULATOR

The DS Regulator is not electrical. It uses two different metals bonded together. The metals expand in different ways, directing the heat to where it is needed. Mounted directly on the hot surface of the stove, it governs the temperature by opening or closing the draft control. This draft control connects to a specially designed draft intake, through which air can enter to increase or decrease the temperature of the fire, depending on the heat radiated from the stove. The DS Regulator is equipped with a 5-position mechanical control dial.



SPECIFICATIONS

	#2100 WH
Fuel	Coal
Heating area (recommended)	1500-3000 sq. ft.
Efficiency	80%
BTU approximately	130,000
Firebox size (WxD)	16" x 20"
Firebox volume	4.0 cu. ft.
Log size	18"
Overall size (WxDxH)	27.75" x 27" x 40"
Load door size (WxH)	16" x 10.5"
Ash door size (WxH)	16.5" x 5.5"
Top exhaust	N/A
Rear exhaust	33.25" center of flue
Blower CFM	N/A
Coal hopper capacity (Approx.)	60 lbs.
Coal volume with hopper (Approx.)	135 lbs.
U.L. tested	Yes*
Weight	540 lbs.
Sheet metal jacket	Standard
Warranty	5-year limited

CLEARANCE FROM COMBUSTIBLES

Side	18"
Back	24"
Front	48"
Flue/Stove pipe	18"
Ceiling	36"

All units require a class "A" all fuel chimney installation that must conform to local and state codes.

*Safety tested and labeled to U.L. Standards by Guardian Fire testing, to U.L. 391, ETL78-1, CAN/CSA B-366.1



Manufactured by DS Stoves, Gordonville, PA ■ (717) 768-3853



Since 1980, DS Stoves has been the premier choice for whole house heating solutions. As a family-owned business in Lancaster, Pennsylvania, we are honored to apply our family values and integrity to every wood, coal furnace and stove we manufacture. Traditional craftsmanship defines each stove, with a promise of high efficiency, low maintenance and quality to last a lifetime. With four divisions: Stove Manufacturing, Retail, Wholesale, Custom and Production Fabrication; we engineer, manufacture and custom-make stoves for sale in our local retail store and across the country. DS Stoves is rich in tradition, with honesty and integrity built in.

Which DS product is right for you?

	First Floor	Basement	Whole House	Forced Hot Air	Coal	Wood	Freestanding Unit	Hot Water Heating	Green House/Shop
DS Circulator	●	●	●		●		●		
EnergyMax #110	●	●	●		●	●	●		
EnergyMax #160		●	●		●	●	●		●
Kozy-King		●	●	●	●	●			●
Ecomiser		●	●	●	●	●			●
HeatRight	●	●	●		●	●	●		
Comfort Max	●	●	●		●	●	●		
Econo Riteburn	●	●	●		●	●	●		●
CoalMaster		●	●		●		●		●
Power Boilers # 5000, 6000, 7000					●	●		●	●
Aqua-Gem Boilers #1100 , 3200, 4200		●	●		●	●		●	●

Things to Consider When Purchasing

#1100 100,000 BTU Aqua-Gem _____
 #3200 160,000 BTU Aqua-Gem _____
 #4200 230,000 BTU Aqua-Gem _____
 #1100-5 Insulated Jacket _____
 #3200-5 Insulated Jacket _____
 #4200-5 Insulated Jacket _____
 #4-GPMC Domestic Water Coil _____
 #L6006A Well Type Aquastat _____
 #EB-75 Pressure Reducing Valve _____
 #T30-ET T30 Expansion Tank _____
 CO and Smoke Alarm _____
 _____ ft. _____ inch Stove Pipe
 Black or Stainless Steel _____
 _____ Pieces _____ inch Elbow (2 max)
 Black or Stainless Steel _____
 _____ inch Trim Collar for Masonry Chimney _____
 Screws for Stove Pipe
 Black or Stainless Steel _____
 Manual Damper _____
 _____ ft. Stainless Steel Chimney Relining Kit _____
 _____ ft. Insulated Chimney
 Masonry or Stainless Steel _____
 Optional Forced Draft _____
 Circulator Pump _____
 Mixing Valve _____
 1/8" NPT Auto Air Vent _____
 Optional Rear Exhaust _____
 Subtotal _____
 Tax _____
TOTAL _____

Prices are subject to change without notification

Authorized Dealer



Aqua-Gem

Models #1100, 3200, 4200



A versatile boiler to work with a variety of systems



Where tradition, craftsmanship and quality come first

Why Buy an Aqua-Gem Boiler?

DS is a family-owned business packed with 30 years experience in designing and engineering boilers. This hydronic system requires no electricity to heat water for floor heating, baseboard, freestanding radiators, heat pumps, or domestic water. It works well with new or existing oil or electric boilers. Our boilers circulate water in the front to prevent cracking. Each unit is pressure tested to 120 PSI and has a powerful heat exchanger for maximum efficiency. Constructed from 1/4" steel, this Aqua-Gem boiler easily maintains water temperature and features a large capacity ash pan. All our boilers are designed with the best cast iron grate system and built to last.

FEATURES:

- Burns coal or wood
- Safety tested to U.L. standards
- Secondary combustion system
- Heavy duty cast iron grate system with external Shaker handle
- 1/2" NPT fitting for temperature pressure gauge
- 3/4" NPT fitting for ASME pressure relief valve
- 3/4" NPT fitting for Aquastat
- 3/4" fitting for Samson draft regulator
- Large 6" high ash pan
- Optional 4-gallon per minute domestic water coil
- Optional forced draft
- Optional insulation/sheet metal cabinet
- Made in the USA

This 4-gallon-per-minute domestic water coil can heat your hot water or work in conjunction with your existing domestic water system. You can save up to \$100.00 per month over LP gas, electric or heating fuel.

SPECIFICATIONS

	#1100	#3200	#4200
Fuel	Wood & Coal	Wood & Coal	Wood & Coal
Heating area (recommended)	1000-2400 sq. ft.	2000-3500 sq. ft.	3000-5000 sq. ft.
Efficiency	78%	78%	78%
BTU approximately	100,000	160,000	230,000
Firebox size (WxDxH)	16.5" x 19" x 20"	19" x 24" x 25"	19" x 30" x 25"
Firebox volume	3.6 cu. ft.	7.0 cu. ft.	8.2 cu. ft.
Log size	18"	22"	28"
Overall size (WxDxH)	23.5" x 25" x 49.5"	26" x 30" x 53.5"	26" x 36" x 53.5"
Load door size (WxH)	11" x 12"	14" x 14.5"	14" x 14.5"
Ash door size (WxH)	16.5" x 9"	16.5" x 9"	16.5" x 9"
Top exhaust	6" Standard	7" Standard	8" Standard
Rear exhaust	Optional 6"- 39" center of flue	Optional 7"- 42.5" center of flue	Optional 8"- 42.5" center of flue
Water capacity	27 Gallons	40 Gallons	45 Gallons
Inlet/outlet	1.25"	2"	2"
U.L. tested	Yes*	Yes*	Yes*
Weight	800 lbs.	1050 lbs.	1250 lbs.
Insulated jacket	Optional	Optional	Optional
Warranty	5-year limited 1-year controls	5-year limited 1-year controls	5-year limited 1-year controls

CLEARANCE FROM COMBUSTIBLES

Side	12"	12"	12"
Back	16"	16"	16"
Front	48"	48"	48"
Flue/Stove pipe	18"	18"	18"
Ceiling	36"	36"	36"

All units require a class "A" all fuel chimney installation that must conform to local and state codes.

*Safety tested to U.L. #2523.



DS 3200 with sheet metal insulation kit

Manufactured by DS Stoves, Gordonville, PA ■ (717) 768-3853



Since 1980, DS Stoves has been the premier choice for whole house heating solutions. As a family-owned business in Lancaster, Pennsylvania, we are honored to apply our family values and integrity to every wood, coal furnace and stove we manufacture. Traditional craftsmanship defines each stove, with a promise of high efficiency, low maintenance and quality to last a lifetime. With four divisions: Stove Manufacturing, Retail, Wholesale, Custom and Production Fabrication; we engineer, manufacture and custom-make stoves for sale in our local retail store and across the country. DS Stoves is rich in tradition, with honesty and integrity built in.

Which DS product is right for you?

	First Floor	Basement	Whole House	Forced Hot Air	Coal	Wood	Freestanding Unit	Hot Water Heating	Green House/Shop
DS Circulator	●	●	●		●		●		
EnergyMax #110	●	●	●		●	●	●		
EnergyMax #160		●	●		●	●	●		●
Kozy-King		●	●	●	●	●			●
Ecomiser		●	●	●	●	●			●
HeatRight	●	●	●		●	●	●		
Comfort Max	●	●	●		●	●	●		
Econo Riteburn	●	●	●		●	●	●		●
CoalMaster		●	●		●		●		●
Power Boilers # 5000, 6000, 7000					●	●		●	●
Aqua-Gem Boilers #1100 , 3200, 4200	●	●			●	●		●	●

Things to Consider When Purchasing

#5000 380,000 BTU Boiler _____

#6000 450,000 BTU Boiler _____

#7000 520,000 BTU Boiler _____

#4-GPMC Domestic Water Coil..... _____

#L6006A Well Type Aquastat _____

#EB-75 Pressure Reducing Valve..... _____

#T30-ET T30 Expansion Tank..... _____

CO and Smoke Alarm _____

_____ ft. _____ inch Stove Pipe

Black or Stainless Steel _____

_____ Pieces _____ inch Elbow (2 max)

Black or Stainless Steel _____

_____ inch Trim Collar for Masonry Chimney . _____

Screws for Stove Pipe

Black or Stainless Steel _____

Manual or Barometric Damper _____

_____ ft. Stainless Steel Chimney Relining Kit _____

_____ ft. Insulated Chimney _____

Masonry or Stainless Steel..... _____

Optional Forced Draft _____

Circulator Pump _____

Mixing Valve _____

1/8" NPT Auto Air Vent _____

Insulated Jacket _____

Radiators (Buderus) _____

Optional Rear Exhaust..... _____

Subtotal _____

Tax _____

TOTAL _____

Prices are subject to change without notification

Authorized Dealer

DS STOVES Power Boilers

Models #5000, 6000, 7000



Large area boilers for a variety of systems

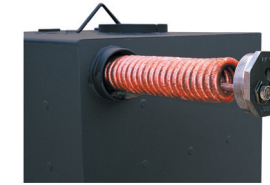


Where tradition, craftsmanship and quality come first

One Source Heating

Our hydronic units require no electricity to heat water for floor heating, baseboard, freestanding radiators, heat pumps, or domestic water systems.

Constructed from 1/4" steel, these boilers easily maintain water temperature. Each unit is pressure tested to 120 PSI and has a powerful heat exchanger for maximum efficiency.



This 4-gallon-per-minute domestic water coil can heat your hot water or work in conjunction with your existing domestic water system. You can save up to \$100.00 per month over LP gas, electric or heating fuel.

FEATURES:

- Heat the shop and home with one boiler
- Specializing in greenhouse applications
- Natural or forced draft options
- Pressure tested to 120 PSI
- Heat exchanger to maximize efficiency
- All constructed from 1/4" plate steel
- Can be added to any existing water system
- Domestic water option
- 2" NPT inlet/outlet
- Five-year limited warranty
- Made in the USA

SPECIFICATIONS

	#5000	#6000	#7000
Fuel	Wood & Coal	Wood & Coal	Wood & Coal
Heating area (recommended)	up to 7500 sq. ft.	up to 10,000 sq. ft.	up to 12,000 sq. ft.
Heating area for a greenhouse (recommended)	up to 3800 sq. ft.	up to 4500 sq. ft.	up to 6000 sq. ft.
Efficiency	Approx. 80%	Approx. 80%	Approx. 80%
BTU approximately	380,000	450,000	520,000
Firebox size (W x D)	24" x 39"	24" x 45.5"	24" x 52"
Firebox volume	13 cu. ft.	15.2 cu. ft.	17.3 cu. ft.
Log size	36"	42"	48"
Overall size (WxDxH)	33.5" x 46" x 62"	33.5" x 53" x 62"	33.5" x 59" x 72"
Load door size (WxH)	14" x 14.5"	14" x 14.5"	18" x 14.5"
Ash door size (WxH)	16.5" x 8.5"	16.5" x 8.5"	16.5" x 8.5"
Top exhaust	8" Standard	8" Standard	10" Standard
Rear exhaust	8" - 50.75" center of flue	8" - 50.75" center of flue	10" - 56.75" center of flue
Domestic water	Optional 4 GPM coil	Optional 4 GPM coil	Optional 4 GPM coil
Water capacity	125 Gallons	136 Gallons	175 Gallons
U.L. tested	No	No	No
Weight	1950 lbs.	2100 lbs.	2500 lbs.
Insulated sheet metal jacket	Optional (not stock item)	Optional (not stock item)	Optional (not stock item)
Warranty	5-year limited	5-year limited	5-year limited

CLEARANCE FROM COMBUSTIBLES

Side	18"	18"	18"
Back	18"	18"	18"
Front	48"	48"	48"
Flue/Stove pipe	18"	18"	18"
Ceiling	36"	36"	36"

All units require a class "A" all fuel chimney installation that must conform to local and state codes.



Manufactured by DS Stoves, Gordonville, PA ■ (717) 768-3853



Since 1980, DS Stoves has been the premier choice for whole house heating solutions. As a family-owned business in Lancaster, Pennsylvania, we are honored to apply our family values and integrity to every wood, coal furnace and stove we manufacture. Traditional craftsmanship defines each stove, with a promise of high efficiency, low maintenance and quality to last a lifetime. With four divisions: Stove Manufacturing, Retail, Wholesale, Custom and Production Fabrication; we engineer, manufacture and custom-make stoves for sale in our local retail store and across the country. DS Stoves is rich in tradition, with honesty and integrity built in.



Things to Consider When Purchasing

- #2530 Round Canner
- #2540 Round Canner
- #2437 Square Canner.....
- #2738 Deluxe Canner.....
- #15 Stove Top Canner 15 qt.....
- #25 Stove Top Canner 25 qt.....
- #70LPG 70,000 BTU Burner Kit.....
- #125LPG 125,000 BTU Burner Kit.....
- #DB60D 60,000 BTU 2-Burner Stove
- #EX60LW 60,000 BTU 2-Burner Stove
- #BS40C Table Top Stove
- _____ ft. _____ inch Stove Pipe
 - Black or Stainless Steel
- _____ Pieces _____ inch Elbow (2 max)
 - Black or Stainless Steel
- _____ inch Trim Collar for Masonry Chimney
- Screws for Stove Pipe
 - Black or Stainless Steel
- Manual Damper
- Stainless Steel Rack for
 - #2530, #2540, #2437, #2738

Subtotal _____

Tax _____

TOTAL _____

Prices are subject to change without notification

Authorized Dealer



Canners

Models #2530, 2540, 2437, 2738, 15, 25, 70LPG, 125LPG, DB60D, EX60LW, BS40C



Your #1 Step to Cold Packing



Where tradition, craftsmanship and quality come first

From Small to Large

These canners are designed to cold pack and cook large batches of food. You can save money burning wood or inserting an LP Gas burner. The 15 and 25 canner models are specially designed to fit our 2-burner gas cook stoves. We make canners from 15 to 36 quart, holding 13 to 37 gallons! Use the canners on the stove top or freestanding wood fired.



#2530 Round Canner

- 25" diameter x 34" high
- Stainless steel with wooden jar rack
- Holds approximately 30 quart jars per layer
- Capacity 30 gallons
- Portable - for outdoor use only
- 6" standard flue with stovepipe holder
- Lockable drain
- Designed to burn wood or LP gas burner can be installed

#2540 Round Canner

- 25" diameter x 36" high
- Stainless steel with wooden jar rack
- Holds approximately 30 quart jars per layer
- Capacity 40 gallons
- Portable - for outdoor use only
- 6" standard flue with stovepipe holder
- Lockable drain
- Designed to burn wood or LP gas burner can be installed



#2437 Square Canner

- 24"W x 24"D x 34"H
- Stainless steel with wooden jar rack
- Holds approximately 36 quart jars per layer
- Capacity 37 gallons
- Portable - for outdoor use only
- 6" standard flue with stove pipe holder
- Lockable ball valve
- Designed to burn wood or LP gas burner can be installed



#2738 Deluxe Canner

- 27" square x 34" high
- Capacity 37 gallons
- Double wall with fire brick
- 6" flue
- Has two hinged lids
- Heats faster than other units



#BS40C Ranger II Table Top Stove

- The power of a big stove in a compact body
- Light weight cast aluminum burners
- 34,000 total BTUs/hr
- 5 ft. regulator and hose included
- Matchless ignition

#15 Stove Top Canner (Shown above with #BS40C)

- 20.5"W x 11.5"D x 13"H
- Two burner canner
- Capacity 13 gallons
- All stainless steel
- Holds 15 quart jars
- Designed to fit cook stove or tabletop stove



#DB60D 2-Burner Stove (Shown with 25 qt. Stove Top Canner)

- 14" x 32" cooking area
- 60,000 total BTUs/hr
- 29" cooking height
- Matchless ignition
- Deluxe folding legs
- Folding side shelves



#EX60LW 2-Burner Stove (Shown with 25 qt. Stove Top Canner)

- 14" x 32" cooking area
- 60,000 total BTUs/hr
- 29" cooking height
- Detachable legs
- Use for cooking and canning in lots of applications

#25 Stove Top Canner (Shown above with #EX60LW)

- 32"W x 13.5"D x 13"H
- Capacity 23 gallons
- All stainless steel
- Holds 25 quart jars
- Designed to fit on a commercial burner
- Has 1/2" NPT at bottom for drain



#70LPG Burner

- 10" cast iron low pressure LP burner
- Adjustable, max 125,000 BTUs
- Pilot with safety shut-off
- Designed to fit #2530, 2540, 2738 canners



#125LPG Burner

- 12" cast iron low pressure LP burner
- Adjustable, max 125,000 BTUs
- Pilot with safety shut-off
- Designed to fit #2530, 2540, 2738 or custom size canners

Manufactured by DS Stoves, Gordonville, PA ■ (717) 768-3853